

High Potency EPA & DHA

Supplement Facts

Serving Size One Light Yellow Softgel Capsule

Amount Per Serving	% Daily Value
Calories	15
Total Fat	1.5 g 2%†
Total Omega-3s	1171 mg *
EPA (Eicosapentaenoic Acid) Omega-3	714 mg *
DHA (Docosahexaenoic Acid) Omega-3	286 mg *
Other Omega-3s	171 mg *

† Percent Daily Value based on a 2,000 calorie diet.
* Daily Value not established.

OTHER INGREDIENTS: Fish Body Oil, Gelatin, Glycerin, Purified Water, Mixed Tocopherols.
CONTAINS: Soybeans, Fish (Anchovy, Mackerel, Sardine, Smelt, Salmon, Tuna, Cod or a Combination Thereof).



Circulatory Health

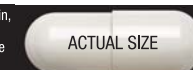
Supplement Facts

Serving Size One White Capsule

Amount Per Serving	% Daily Value
L-Arginine	250 mg*
L-Citrulline	100 mg*
trans-Resveratrol	30 mg*

* Daily Value not established.

OTHER INGREDIENTS: Microcrystalline Cellulose, Gelatin, Stearic Acid Vegetable Source, Hydroxypropylcellulose, Magnesium Stearate Vegetable Source, Titanium Dioxide (Mineral Whitener), Silica.



¹In a randomized, double-blind, placebo-controlled study of 112 healthy volunteers, subjects taking the GNC vitamin and mineral blends for six weeks experienced significant improvements in serum levels of certain key nutrients compared to a placebo and a leading multivitamin formula based upon multivariate statistical analyses of a group of B vitamins (thiamin, niacin, riboflavin, pantothenic acid, biotin, folic acid and vitamins B-6 and B-12) and key antioxidants and carotenoids (a group of beta-carotene, alpha-tocopherol, selenium, lutein and lycopene). Statistical improvements in SF-36 Vitality and Mental Health scores were also observed compared to placebo.

²In a randomized, double-blind, placebo-controlled crossover study, 19 volunteers consumed 3 doses of resVida® (30 mg, 90 mg, 270 mg) and a placebo at weekly intervals. Flow-mediated dilation (FMD) of the brachial artery was measured one hour after ingestion of each treatment and was significantly increased at all 3 doses relative to placebo. 30 mg of resVida® demonstrated 2.5% greater increase in FMD relative to placebo.

Men's Prostate

Supplement Facts

Serving Size One Dark Brown Softgel Capsule

Amount Per Serving	% Daily Value
Saw Palmetto (<i>Serenoa repens</i>) Berry Extract (85% Fatty Acids = 136 mg) (0.2% Sterols = 0.32 mg)	160 mg*

* Daily Value not established.

OTHER INGREDIENTS: Olive Oil, Gelatin, Glycerin, Purified Water, Caramel Color, Titanium Dioxide (Mineral Whitener).



Vitality & Sexual Health

Supplement Facts

Serving Size One Capsule

Amount Per Serving	% Daily Value
Maca (<i>Lepidium meyenii</i>) Root Powder	450 mg*
Eleuthero (<i>Eleutherococcus senticosus</i>) Root Powder	12.5 mg*
Horny Goat Weed (<i>Epimedium</i> spp.) Extract	12.5 mg*
Pumpkin (<i>Cucurbita</i> spp.) Seed Powder	12.5 mg*

* Daily Value not established.

OTHER INGREDIENTS: Gelatin, Microcrystalline Cellulose, Hydroxypropylcellulose, Stearic Acid Vegetable Source, Magnesium Stearate Vegetable Source, Silica, Sodium Lauryl Sulfate, Maltodextrin.



Curcuwin® CurcuWIN® trademark belongs to OmniActive Health Technologies.

resVida® resVida® is a trademark of DSM.

Lutemax® 2020 is a trademark of OmniActive Health Technologies.

▲ WARNING: Cancer and Reproductive Harm — www.P65Warnings.ca.gov. Consult your physician prior to using this product if you are pregnant, nursing, taking medication, or have a medical condition. Discontinue use two weeks prior to surgery. Inform your physician of this product's biotin content before any lab test. Niacin may cause a temporary flushing reaction.

No Artificial Flavors, Gluten Free.
KEEP OUT OF REACH OF CHILDREN.
Store in a cool, dry place.
For More Information: 1-888-462-2548, GNC.com



GNC

MEGA MEN

Performance & Vitality

Achieve your daily nutritional goals with customized ingredients plus a multivitamin with more than 30 clinically studied ingredients.

✓ **Men's Health**
Contains a clinically studied multivitamin blend shown to work better than a basic multivitamin.[^]

✓ **Antioxidants**
Packed with antioxidants for cell protection and immune support.*

✓ **Circulation**
Features clinically studied resVida® resveratrol to enhance blood vessel dilation.♦ Also has ingredients to help maintain blood vessel tone.*

✓ **Prostate & Sexual Health**
Includes lycopene and saw palmetto to support prostate health.* Also has L-arginine, which plays a key role in sexual health.*

✓ **Overall Health & Wellness**
Helps support joint and cardiovascular health as well as cholesterol levels that are already in the normal range.*

[^] These statements have not been evaluated by the Food and Drug Administration. This product is not intended to diagnose, treat, cure, or prevent any disease.

GNC

MEGA MEN

Performance & Vitality

Dietary Supplement

VITAPAK® PROGRAM WITH CLINICALLY STUDIED MULTIVITAMIN BLEND[^]

- Antioxidants • Circulation*
- Prostate & Sexual Health*
- Overall Health & Wellness



30 PACKS
30-DAY SUPPLY

[^] These statements have not been evaluated by the Food and Drug Administration. This product is not intended to diagnose, treat, cure, or prevent any disease.

CLINICALLY STUDIED[^]

CODE 219812
DIRECTIONS: As a dietary supplement, take the contents of one pack daily with food.
Each pack contains:
Mega Men® Multivitamin

Supplement Facts

Serving Size Two Beige Caplets

Amount Per Serving	% Daily Value
Vitamin A (50% as beta-Carotene & 50% Retinyl Acetate)	1500 mcg RAE 167%
Vitamin C (as Ascorbic Acid & Calcium Ascorbate)	300 mg 333%
Vitamin D (as Cholecalciferol)	40 mcg 200%
Vitamin E (as d-alpha Tocopheryl Acetate)	20.1 mg 134%
Vitamin K (as Phytonadione)	80 mcg 67%
Thiamin (Vitamin B-1)(as Thiamin Mononitrate)	50 mg 4167%
Riboflavin (Vitamin B-2)	50 mg 3846%
Niacin (as Niacinamide & Niacin)	50 mg 313%
Vitamin B-6 (as Pyridoxine Hydrochloride)	50 mg 2941%
Folate (Folic Acid 400 mcg)	680 mcg DFE 170%
Vitamin B-12 (as Cyanocobalamin)	50 mcg 2083%
Biotin	300 mcg 1000%
Pantothenic Acid (as Calcium d-Pantothenate)	50 mg 1000%
Choline (as Choline Bitartrate)	10 mg 2%
Calcium (as Calcium Carbonate, Calcium d-Pantothenate & Calcium Ascorbate)	200 mg 15%
Iodine (as Potassium Iodide)	150 mcg 100%
Magnesium (as Magnesium Oxide)	100 mg 24%
Zinc (as Zinc Oxide)	25 mg 227%
Selenium (as L-Selenomethionine)	200 mcg 364%
Copper (as Cupric Sulfate)	2 mg 222%
Manganese (as Manganese Sulfate)	2 mg 87%
Chromium (as Chromium Chloride)	120 mcg 343%
Molybdenum (as Sodium Molybdate)	75 mcg 167%

Amount Per Serving	% Daily Value
Fruit & Vegetable Blend	62.5 mg *
Orange (<i>Citrus sinensis</i>) Peel Powder, Spinach (<i>Spinacia oleracea</i>) Leaf Powder, Elderberry (<i>Sambucus nigra</i>) Fruit Powder, Acai (<i>Euterpe oleracea</i>) Fruit Powder, Blueberry (<i>Vaccinium</i> spp.) Pomace Powder, Pomegranate (<i>Punica granatum</i>) Fruit Powder, Broccoli (<i>Brassica oleracea</i> var. <i>italica</i>) Floret and Stem Powder, Tomato (<i>Lycopersicon esculentum</i>) Fruit Powder, Cranberry (<i>Vaccinium</i> spp.) Fruit Powder, Grape (<i>Vitis vinifera</i>) Skin Powder, Carrot (<i>Daucus carota</i>) Root Powder, Papaya (<i>Carica papaya</i>) Fruit Powder, Pineapple (<i>Ananas comosus</i>) Fruit Powder, Cauliflower (<i>Brassica oleracea</i> var. <i>botrytis</i>) Floret and Stem Powder, Kale (<i>Brassica oleracea</i> var. <i>acephala</i>) Leaf Powder, Apple (<i>Malus pumila</i>) Fruit Powder, Kiwi (<i>Actinidia deliciosa</i>) Fruit Powder	
L-Arginine (as L-Arginine Monohydrochloride)	50 mg *
L-Glutamine	50 mg *

Amount Per Serving	% Daily Value
alpha-Lipoic Acid	25 mg *
Inositol	10 mg *
Silica (as Silicon Dioxide)	4 mg *
Saw Palmetto (<i>Serenoa repens</i>) Berry Extract	3 mg *
Pumpkin (<i>Cucurbita</i> spp.) Seed Powder	3 mg *
Boron (as Sodium Borate)	2 mg *
Lutein (from Marigold [<i>Tagetes erecta</i>] Flower Extract)	2 mg *
Grape (<i>Vitis vinifera</i>) Seed Extract	1 mg *
Lycopene	1 mg *
Turmeric (<i>Curcuma longa</i>) Root Extract (20% Curcuminoids = 100 mcg)	500 mcg *
Zeaxanthin (as Zeaxanthin Isomers)	400 mcg *
Astaxanthin (from <i>Haematococcus pluvialis</i>)	50 mcg *
Vanadium (as Sodium Metavanadate)	10 mcg *
beta-Cryptoxanthin	10 mcg *

* Daily Value not established.

OTHER INGREDIENTS: Microcrystalline Cellulose, Cellulose, Hydroxypropyl Methylcellulose, Dicalcium Phosphate, Stearic Acid Vegetable Source, Maltodextrin, Hydroxypropylcellulose, Magnesium Stearate Vegetable Source, Food Starch, Mannitol, Gelatin (Porcine, Fish), Corn Starch, Sugar, Calcium Silicate, Natural Vanilla Mint Flavor, Sodium Ascorbate, Methylcellulose, Glucose Syrup, Stevia Leaf Extract, Vegetable Oil, Mixed Carotenoids, Mixed Tocopherols, BHA/BHT, Polyvinyl Pyrrolidone, Ascorbyl Palmitate, Caramel Color, Dextrin, Gum Arabic, Medium Chain Triglycerides, Paprika Extract, Polyethylene Glycol, Polyglycerol Fatty Acid Esters, Polysorbate, Sodium Aluminium Silicate, Sodium Carboxymethylcellulose, Taic, Titanium Dioxide (Mineral Whitener), Tricalcium Phosphate.

CONTAINS: Soybeans and Fish (Anchovy, Mackerel, Sardine, Smelt, Salmon, Tuna, Cod or a Combination Thereof).
Distributed by:
GNC Holdings, LLC
Pittsburgh, PA 15222 USA



GVG